



**EVER-DURABLE WAREPAD**  
**A Suspension Protection System**

Do's and Don'ts/Tips





DON'T: Install EWP Warepads into a compromised hanger or equalizer.

**We do not recommend installing EWP into a worn out OEM part. The Warepads are designed to save on additional wear to the hanger, equalizer and leaf spring. They are not designed to improve a part that is not salvageable.**

**Notes:**

---

---

---

---

---



DO: Use the correct drill bit size for drilling holes.  
**Bolt hole sizes matter. Follow the recommended drill bit size for the OEM hanger, equalizer, and the EWP Warepads.**

**Notes:**

---

---

---

---

---



DON'T: Don't use the wrong bolt size and grade when replacing.

**It is important that the correct bolt size along with a grade 5 or above bolt be used when replacing the EWP Warepad bolts. If the incorrect bolt size is used, the bolt may come loose or not fit properly in the drill hole. If the wrong grade of bolt is used, the bolt may not have the proper strength to hold the Warepad in place. Check the Installation Instructions for the hardware specifications.**

**Notes:**

---

---

---

---

---



DO: Place the washer directly on the EWP Warepad. **For all bolt installations, the washer should always be directly on the EWP Warepad. This will prevent the bolt or nut from sliding through the poly pad and causing the pad to fall out.**

Notes:

---

---

---

---

---

**DON'T:** Be careful not to “Walk” the drill out of position. What will help????



**DO:** Drill a pilot hole into OEM Equalizer or OEM Hanger. Select a drill bit that is 50 percent smaller than the size of the finished hole for a pilot bit. For instance:

Finished drill hole size: 3/8”... Use a 1/4” drill bit for the Pilot Hole.

Finished drill hole size: 11/32”... Use a 1/4” drill bit for the Pilot Hole.

It is important to find the exact center when you drill your pilot hole because this is the hole that will guide the larger-diameter drill bits. The center drill guides the drill into position so that it will not walk and the hole will be out of location.



**OR:** Mark the location of the hole using a center punch to create a small dent in the steel. The dent marks the location and helps keep the drill bit from slicing across the steel. Hold the center punch in position and strike it with a hammer to make your mark.



Notes:

---

---

---

---

---



DO: It does not matter what fastener system is being installed, you must tighten the fastener system properly as follows.

**Bolt tightness. There is no torque for bolt tightness. Snug the bolt. Final Bolt tension should be done manually. Maximum tightening is reached when the Heavy Duty Fender Washer or Flat Washer presses into the polypad surface to cause a minor indentation. The washer may bend slightly. Do not over-tighten to cause the washer to invert or buckle.**

**Please note: The EWP Warepad is a poly pad. It will compress slightly with the weight on the suspension until it finds its natural resting place. Therefore, it is recommended in the Installation Instructions that you re-check fastener tightness after installation.**

**It is also recommended to re-check fastener tightness during your PM's or your routine maintenance schedules. Instructions on these inspections procedures can be found in your Installation Instructions.**

**Notes:**

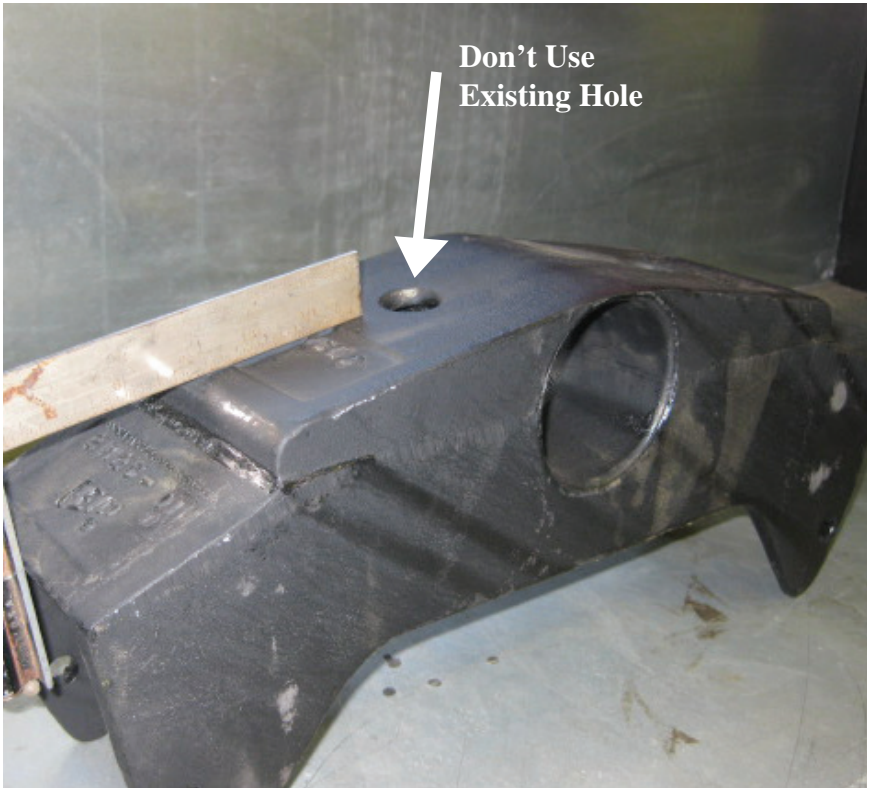
---

---

---

---

---



**DON'T:** Do not use existing holes in Equalizer. Do not use existing holes in the equalizer for your bolt hole. The bolt hole size needs to be drilled with the drill bit size that is recommended for each specific Warepad Part Number. See Installation Instructions.

**Notes:**

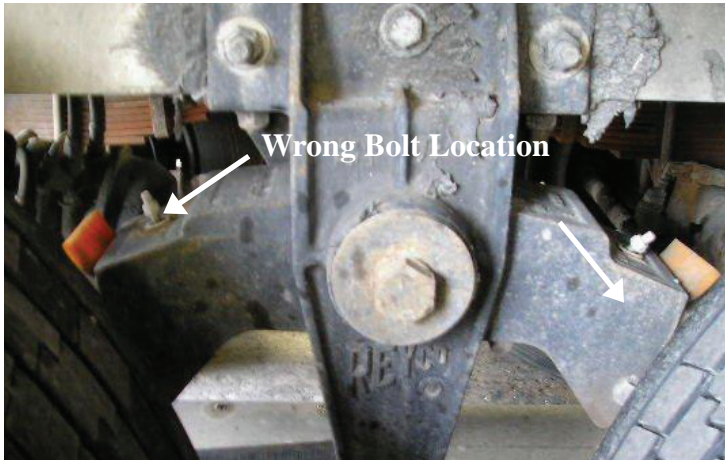
---

---

---

---

---



DON'T: Install the bolts in the wrong equalizer location: **The location of the Equalizer Bolt Hole is important. The recommended bolt hole location found in the Installation Instructions for this equalizer is seen in the top picture at the end of the square. The reason the bolt location will not work in the bottom picture is because the bolts are installed where the surface of the spring will move back and forth on the EWP Wreepad. This will cause the bolts to either loosen, wear off or shear off. They have loosened in the picture.**

Notes:

---

---

---

---

---



DO: Grind down weld line on top of Equalizer.  
**If there is a weld on the top of the equalizer, use a grinder to grind down the weld on the top of the equalizer to make the bolt or nut sit flat on the equalizer.**

**Notes:**

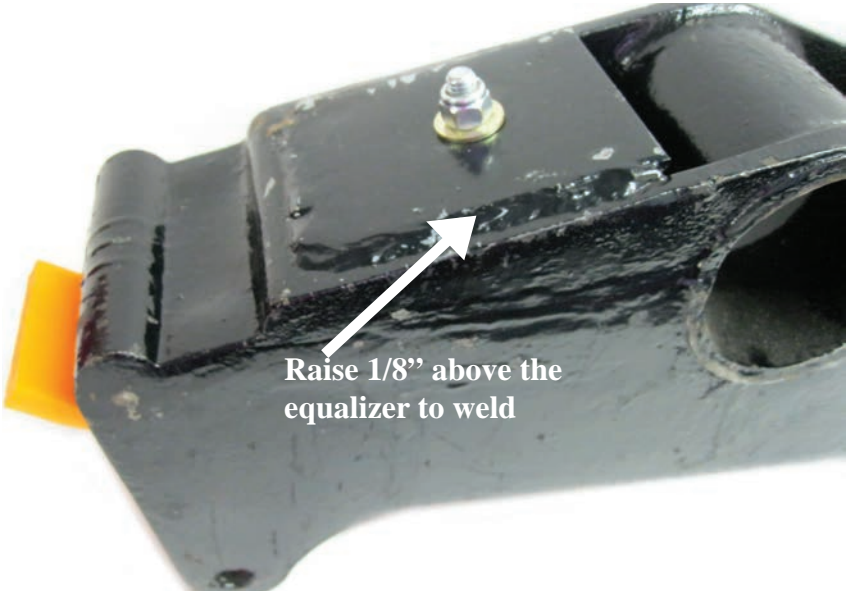
---

---

---

---

---



DO: Install the EWP Warepad into a 21B Open Top Equalizer. **You can install the EWP Equalizer Warepad into a 21B Open Top Equalizer. First, you must weld in a 1/4" steel plate. The plate should be raised 1/8" above the equalizer so that you get a strong weld.**

## INCORRECT INSTALLATION



**DON'T:** Don't attach the EWP Equalizer Warepad on the end of the spring. **The Equalizer Warepad must be attached to the OEM Equalizer.**



DO: Chamfer or smooth down  
the edges of a steel pad.

**If EWP Warepads are installed over an existing steel wear pad, you must chamfer down the edges of the steel pad so that there are “NO SHARP EDGES”. If you do not eliminate the sharp edges, they may cut the EWP Warepad over time.**

**Notes:**

---

---

---

---

---

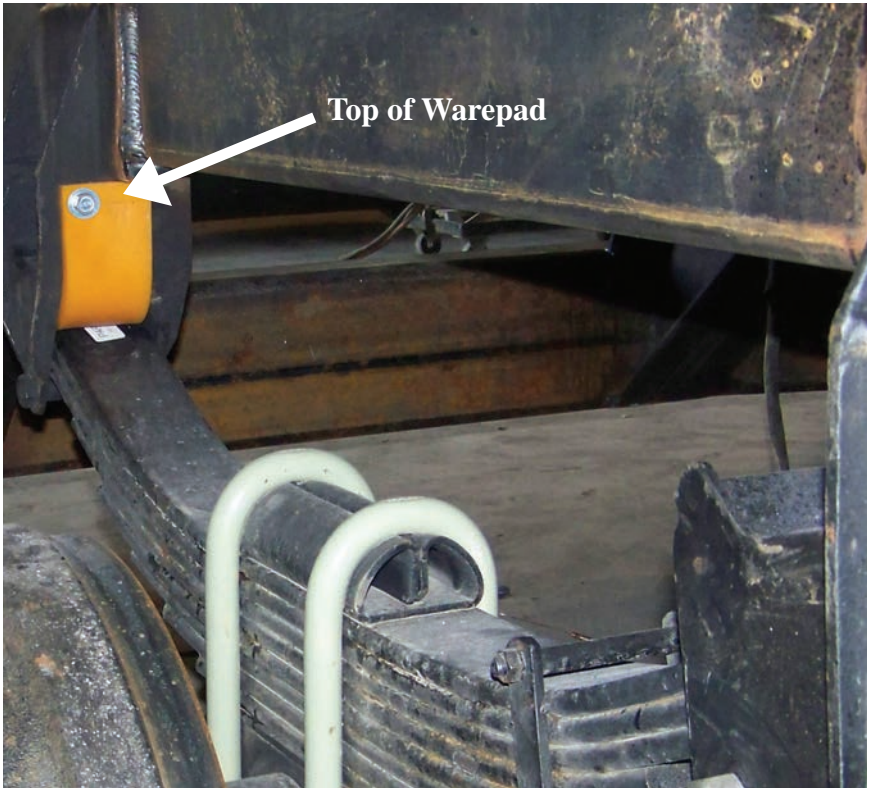


Top of Warepad is  
on wrong side of  
the axle

**DON'T:** Don't install hanger warepad on the wrong side of the axle.

**It is important not to install the hanger warepad on the wrong side of the axle. If the hanger warepad is installed on the wrong side of the axle, as shown, the spring will push the warepad out.**





DO: Install the TOP OF THE HANGER WAREPAD on the axle side of the hanger.

**Notes:**

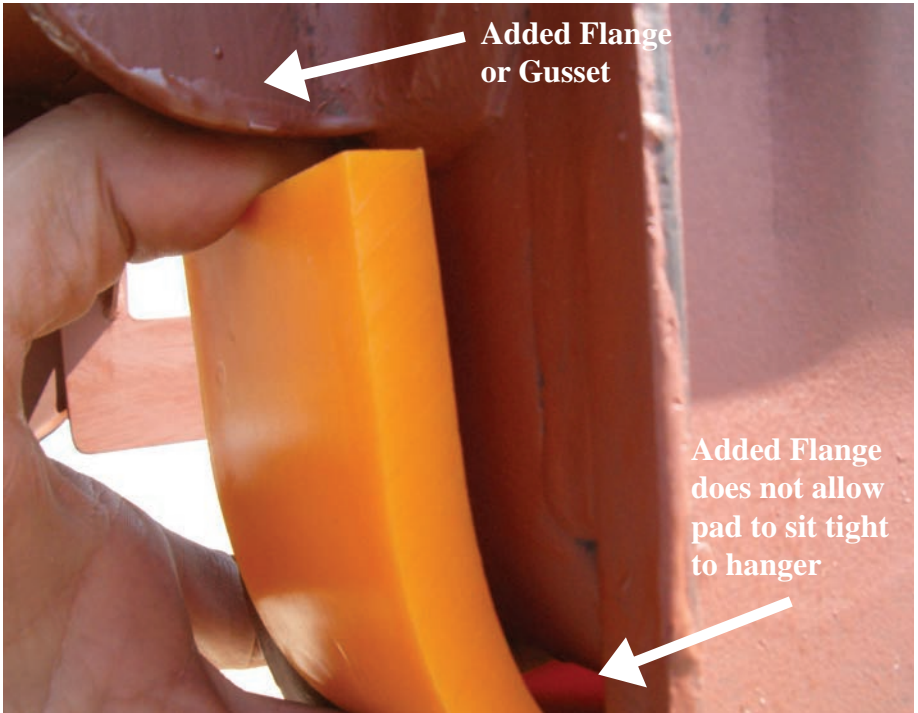
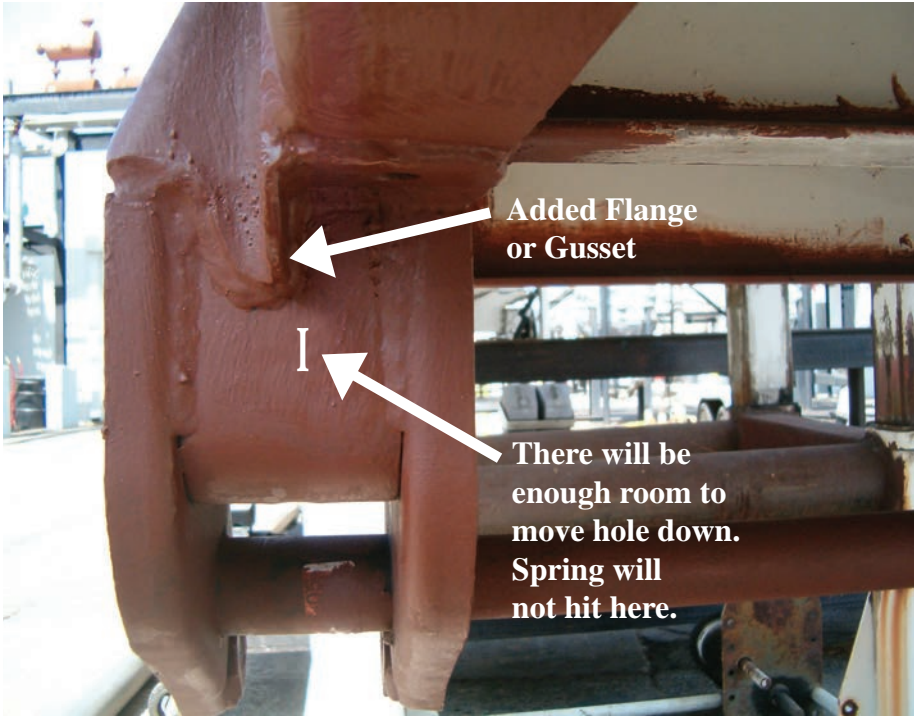
---

---

---

---

---



**DO: If the Hanger has an added flange or gusset, you**  
may trim the TOP OF THE HANGER WAREPAD  
per the following:

**If the Hanger has a flange or gusset that prevents the Warepad from sitting tight to the seat of the hanger (See pictures attached) you may trim the top of the EWP Warepad so that the Warepad will sit tight to the seat of the hanger.**

But, before you trim **the “TOP OF THE WAREPAD,”** make sure that the adjusted bolt hole location on the OEM hanger will not be down too far on the hanger to get in the way of the spring. **If it is too far down, the spring will shear off the bolt. You should be able to visually check this.**

The adjusted OEM hanger bolt hole location will not be in the way of the spring:

**Once you have determined that the adjusted OEM hanger bolt hole location will not be in the way of the spring, either trim off the top of the Warepad or you can grind down a notch into the Warepad to get around the gusset. Follow the Installation Instructions for the EWP Warepad bolt hole location.**

(FYI: This is one of the reasons that EWP does not have pre-drilled holes. It allows you to make adjustments when necessary.)

The adjusted OEM hanger bolt hole location will be in the way of the spring:

**If the spring is going to hit the adjusted OEM hanger bolt hole when the EWP Warepad is installed, this hanger is not EWP compatible. Do not install the Warepad.**

**Notes:**

---

---

---

---

---



**Don't Use  
Existing Hole**

**DON'T:** Do not use existing holes in Hanger.  
**Do not use existing holes in the hanger for your bolt hole.**  
**The bolt hole size needs to be drilled with the drill bit size that is recommended for each specific Warepad Part Number.**  
**See Installation Instructions.**

**Notes:**

---

---

---

---

---