

# WAREPAD PART NUMBER: EWP-FM14, EWP-FM38 - INSTALLATION INSTRUCTIONS

## FISH MOUTH WAREPAD

### Attachment Hardware per Warepad:

- 2 - 5/16" Bolts
- 2 - 5/16" Lock Nuts
- 2 - 5/16" Flat Washers

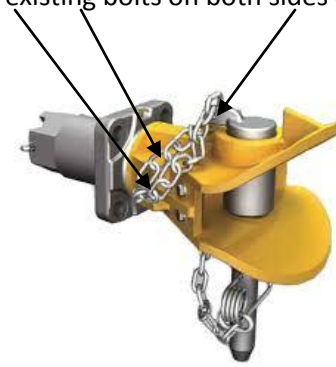
### Equipment/Tools Needed for Installation:

- 5/16" Drill Bit
- 3/8" Drive Ratchet Wrench
- Drill Motor
- 3/8" Drive 5/16" Socket
- Marking Pen
- Red Loctite Series 271
- No. T40 Torque Bit

Step 1. If Fish Mouth has existing steel pads installed, remove the steel pads.



Step 2. Remove existing bolts on both sides of Fish Mouth.



Step 3. Place Fish Mouth Warepad into Fish Mouth. Mark Warepad through the existing bolt holes. Remove Warepad and drill Warepad at the marked bolt hole locations.

### Step 4A-C: FASTENER

#### INSTALLATION/TIGHTENING.

4A: Install Fish Mouth bolts that are supplied into the four bolt hole locations (as shown below).

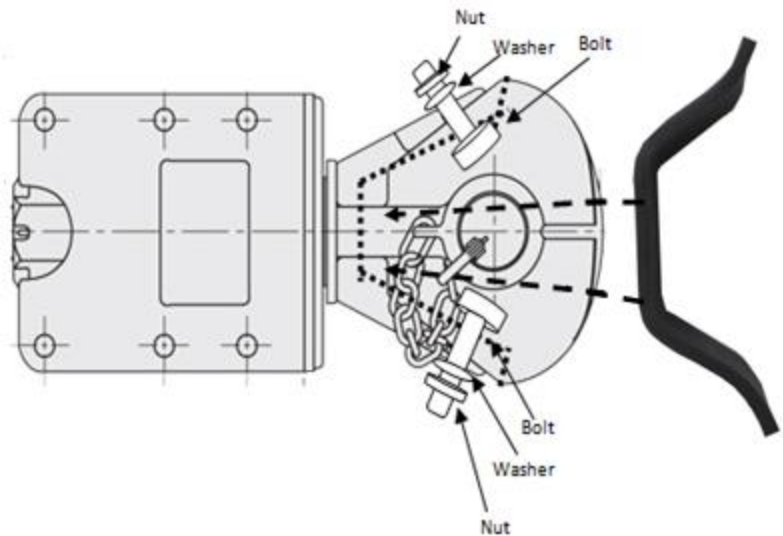
4B: Use Red Loctite Series 271 on the thread of the bolt when installing fasteners.

4C: Install fasteners according to diagram.

4D: **Bolt tightness.** There is no torque for bolt tightness. Tighten the bolt till snug. Bolt tension should be done MANUALLY with a 3/8" Drive Ratchet Wrench, 1/2" Socket and a No. T40 Torque Bit.

4E: **Maximum tightening is reached when the head of the tapered part of the bolt is flush with the Warepad.**

**CAUTION! DO NOT OVER-TIGHTEN TO CAUSE** the tapered part of the bolt to pull through the Warepad.



### FISH MOUTH Maintenance Recommendation:

Once the trailer eye has been backed into the Fish Mouth Warepad, it is recommended to re-check the fastener tightness.