

WAREPAD PART NUMBER: EWP SP - INSTALLATION INSTRUCTIONS

Size of steel plate : 3 1/4" x 4" x 1/4")

RECOMMENDED FOR: Open Top Reyco Equalizer fitted with part number EWP-RE

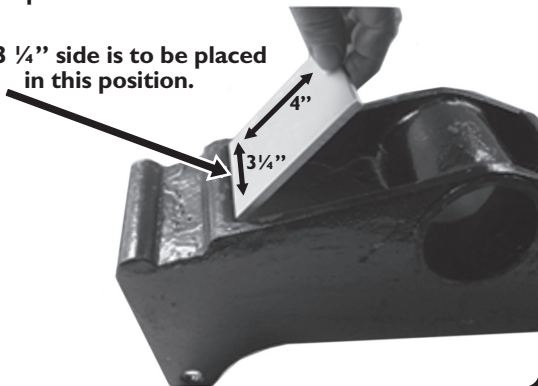
Steel plate may be installed on the OEM Equalizer while on the trailer frame or off. Removing Equalizer from trailer frame is recommended when possible.

Equipment tools needed for installation:

Marking Pen
Drill Motor
3/8" Drill Bit
Welder

Step 1: Place steel plate into Open top and hold in place.

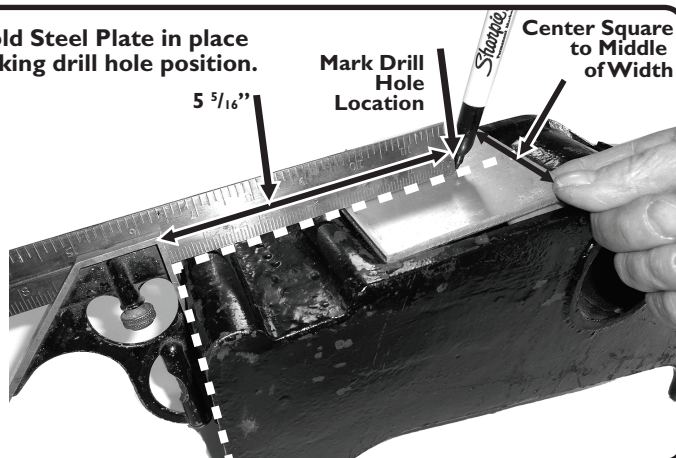
The 3 1/4" side is to be placed in this position.



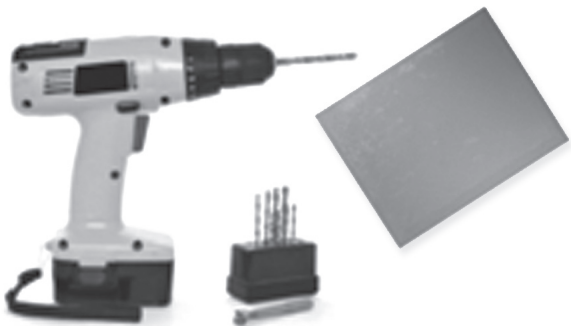
Step 2: Hold Steel Plate in place while marking drill hole position.

Center Square to Middle of Width
Mark Drill Hole Location

5 5/16"

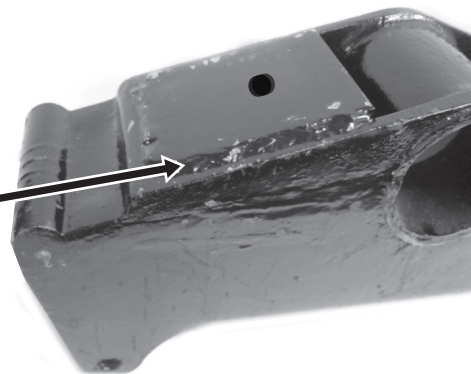


Step 3: Remove steel plate and drill 3/8" hole at marked drill location.



Step 4: Place Steel Plate back into Equalizer and WELD securely into place. Please note: Make sure you place Steel Plate into Equalizer the same way that the measurement was taken.

Plate is 1/4" Thick. Raise 1/8" above Top of Equalizer for a good weld.



Install EWP-RE Warepad per Installation Instructions. Repeat for other side of Equalizer.

Installed with Steel Plate and EWP-RE Warepad.

